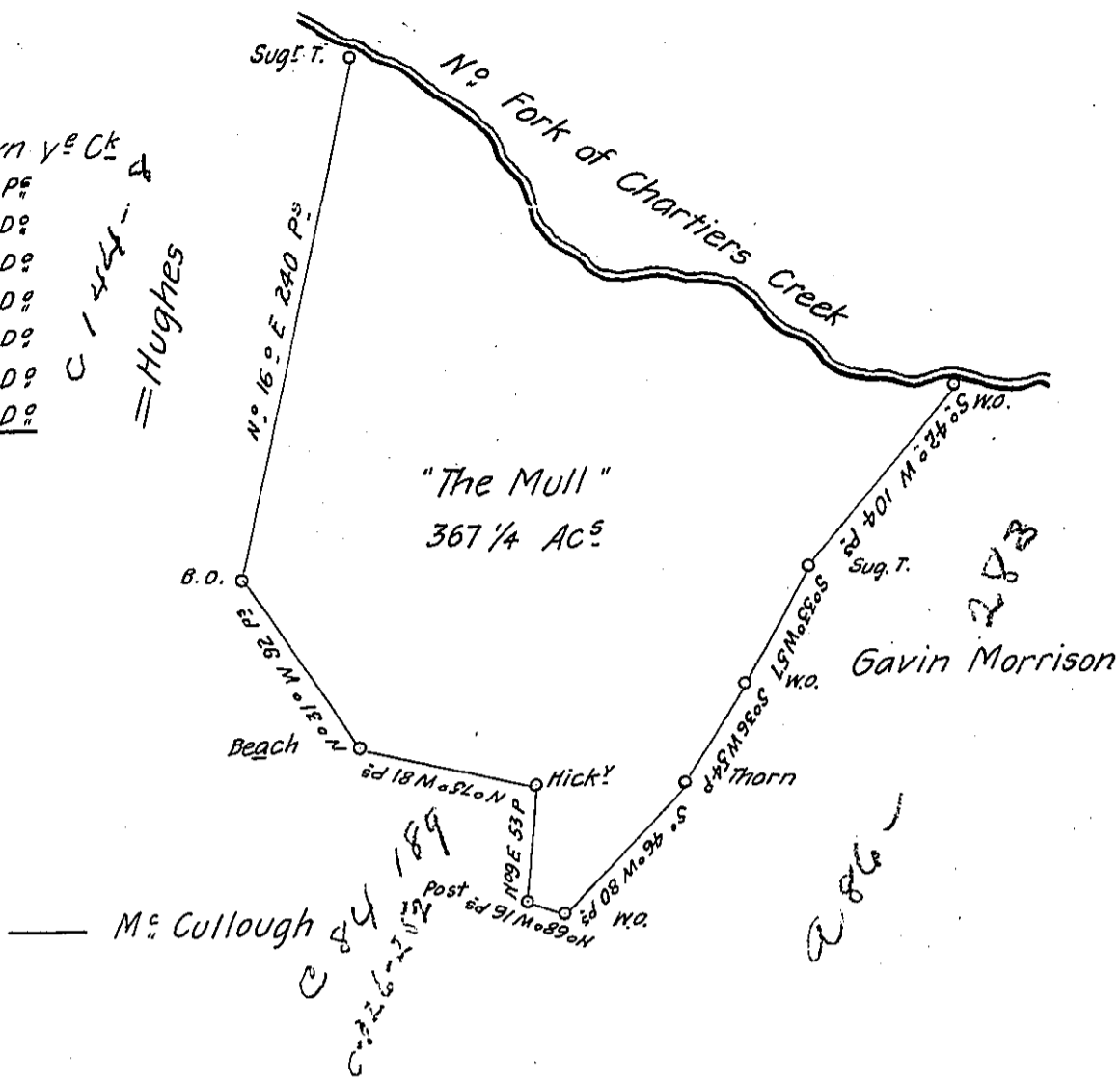


Courses & Dist^{ces} down y^e C^k

- S^o 69^o E 24 P^s
- S^o 49^o E 40 D^s
- S^o 30^o E 52 D^s
- S^o 40^o E 32 D^s
- S^o 87^o E 66 D^s
- S^o 37^o E 64 D^s
- S^o 84^o E 53 D^s

331

C-44-4
= Hughes



A Draught of a Survey called "The Mull" situate on the N^o
 Fork of Chartiers Creek in Washington County cont^g 367 1/4 A^s and the usual
 allow^{ce} for Roads &c. executed Oct^r 15th 1787 in pursuance of a warrant
 granted to Alexander Mc Allister for 367 A^s dated Sept^r 6th 1787

Twice ret^d

Presley Nevill }
 Matt^w Ritchie } Dfs.

Jn^o Lukens Esq^r S. G.

IN TESTIMONY that the above is a copy of the original remaining on file in
 the Department of Internal Affairs of Pennsylvania, made
 conformably to an Act of Assembly approved the 16th day of
 February, 1833, I have hereunto set my Hand and caused
 the Seal of said Department to be affixed at Harrisburg,
 this eighth day of December 1905

Joac P. Brown
 Secretary of Internal Affairs.